



—  
THE  
**TIMBERYARD**  
DEPTFORD  
—

CEDARWOOD  
MANSIONS



**lendlease**

---

THE  
**TIMBERYARD**  
DEPTFORD

---

CEDARWOOD  
MANSIONS

CEDARWOOD MANSIONS IS PART OF THE 203 NEW HOMES OF CEDARWOOD SQUARE, IDEALLY LOCATED BETWEEN PEPYS PARK AND THE WATERLINE LINEAR PARK. CEDARWOOD SQUARE IS MADE UP OF 1, 2, 3 AND 4 BEDROOM HOMES AND FEATURES A RESTORED PUB, THE VICTORIA, AS WELL AS AN ENERGY CENTRE THAT POWERS THE WHOLE DEVELOPMENT.

## NEIGHBOURHOOD PLAN

### BUILDINGS

#### CEDARWOOD SQUARE

- 2A Cedarwood Court
- 2B Cedarwood View
- 2C Cedarwood Townhouse
- 2D Cedarwood Mansions
- 2E Cedarwood Terrace

### KEY

- |                    |                               |
|--------------------|-------------------------------|
| ◆ Cedarwood Square | ◆ Grass / Soft Landscaping    |
| ◆ Larchwood Place  | ◆ Courtyard / Terrace         |
| ◆ Waterline Yard   | ◆ Public Path                 |
| ◆ Beechwood Place  | ◆ Public Pavement / Road      |
| ◆ Elmwood Gardens  | ◆ The Waterline (Linear Park) |
| ◆ Limewood Gardens |                               |
| ⊠ Affordable       |                               |



## GROUND FLOOR PLAN

### KEY

- |                               |                       |
|-------------------------------|-----------------------|
| ◆ Residential Unit            | ◆ Plant               |
| ◆ Affordable Residential Unit | ◆ Car park            |
| ◆ Residential Uses            | ◆ Commercial / Office |
| ◆ Refuse Store                | ◆ Cycle Store         |
| ◆ Energy Centre               |                       |



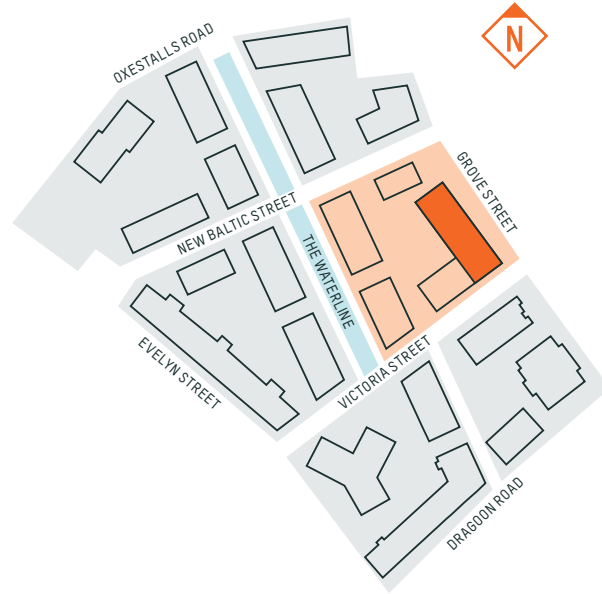
# CEDARWOOD MANSIONS

2D | Ground | DUPLEX 1-8



**KEY**

- ◆ One Bedroom
- ◆ Two Bedroom
- ◆ Three Bedroom
- ◆ Four Bedroom
- ◆ Wheelchair Accessible
- ▲ Dimension Indicator
- W Fitted Wardrobe
- W/D Washer Dryer
- HEC Heating & Electrical
- C Coat Cupboard



**D1**

INTERNAL AREA	103.1 SQ M	1109.8 SQ FT
LIVING/KITCHEN/DINING	6.5 X 6.7M	21'3" X 22'0"
MASTER BEDROOM	3.4 X 6.5M	11'2" X 21'3"
BEDROOM 2	3.2 X 4.0M	10'5" X 13'1"
TERRACE	8.7 SQ M	93.6 SQ FT

**D2**

INTERNAL AREA	105.5 SQ M	1135.6 SQ FT
LIVING/KITCHEN/DINING	6.3 X 7.1M	20'7" X 23'3"
MASTER BEDROOM	3.4 X 6.4M	11'2" X 21'0"
BEDROOM 2	3.1 X 4.1M	10'2" X 13'5"
TERRACE	15.1 SQ M	162.5 SQ FT

**D3**

INTERNAL AREA	109.8 SQ M	1181.9 SQ FT
LIVING/KITCHEN/DINING	6.0 X 7.6M	19'7" X 24'9"
MASTER BEDROOM	2.9 X 7.6M	9'5" X 24'9"
BEDROOM 2	3.0 X 5.0M	9'8" X 16'4"
TERRACE	13.5 SQ M	145.3 SQ FT

**D4**

INTERNAL AREA	100.3 SQ M	1079.6 SQ FT
LIVING/KITCHEN/DINING	4.9 X 5.1M	16'1" X 16'7"
MASTER BEDROOM	2.8 X 7.1M	9'2" X 23'3"
BEDROOM 2	3.5 X 3.8M	11'5" X 12'5"
BEDROOM 3	2.3 X 3.8M	7'5" X 12'5"
TERRACE	10.9 SQ M	117.3 SQ FT

**D5**

INTERNAL AREA	81.3 SQ M	875.1 SQ FT
LIVING/KITCHEN/DINING	6.1 X 5.0M	16'1" X 16'4"
MASTER BEDROOM	3.4 X 4.9M	11'2" X 16'1"
BEDROOM 2	2.7 X 3.8M	8'9" X 12'5"
TERRACE	12.4 SQ M	133.5 SQ FT

**D6**

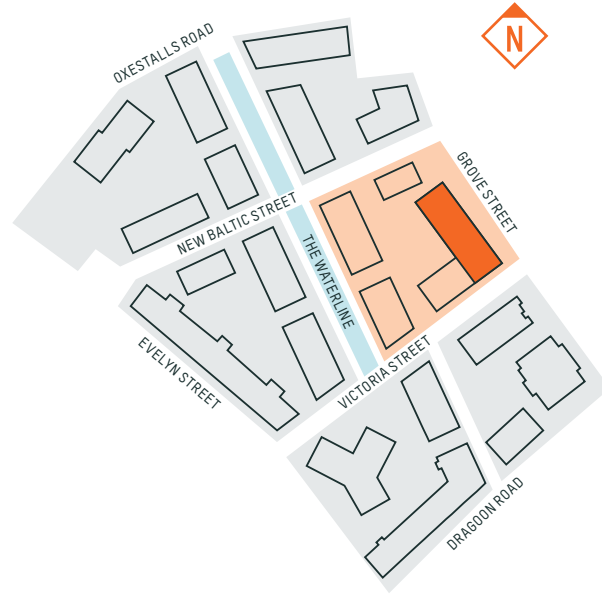
INTERNAL AREA	81.0 SQ M	871.9 SQ FT
LIVING/KITCHEN/DINING	6.1 X 5.0M	20'0" X 16'4"
MASTER BEDROOM	3.4 X 4.9M	11'2" X 16'1"
BEDROOM 2	2.7 X 3.8M	8'9" X 12'5"
TERRACE	13.5 SQ M	145.3 SQ FT

**CEDARWOOD MANSIONS**  
2D | Floor 01 | DUPLEX 1-8



**KEY**

- ◆ One Bedroom
- ◆ Two Bedroom
- ◆ Three Bedroom
- ◆ Four Bedroom
- ◆ Wheelchair Accessible
- ▲ Dimension Indicator
- W Fitted Wardrobe
- W/D Washer Dryer
- HEC Heating & Electrical
- C Coat Cupboard



**D1**

INTERNAL AREA	103.1 SQ M	1109.8 SQ FT
LIVING/KITCHEN/DINING	6.5 X 6.7M	21'3" X 22'0"
MASTER BEDROOM	3.4 X 6.5M	11'2" X 21'3"
BEDROOM 2	3.2 X 4.0M	10'5" X 13'1"
TERRACE	8.7 SQ M	93.6 SQ FT

**D2**

INTERNAL AREA	105.5 SQ M	1135.6 SQ FT
LIVING/KITCHEN/DINING	6.3 X 7.1M	20'7" X 23'3"
MASTER BEDROOM	3.4 X 6.4M	11'2" X 21'0"
BEDROOM 2	3.1 X 4.1M	10'2" X 13'5"
TERRACE	15.1 SQ M	162.5 SQ FT

**D3**

INTERNAL AREA	109.8 SQ M	1181.9 SQ FT
LIVING/KITCHEN/DINING	6.0 X 7.6M	19'7" X 24'9"
MASTER BEDROOM	2.9 X 7.6M	9'5" X 24'9"
BEDROOM 2	3.0 X 5.0M	9'8" X 16'4"
TERRACE	13.5 SQ M	145.3 SQ FT

**D4**

INTERNAL AREA	100.3 SQ M	1079.6 SQ FT
LIVING/KITCHEN/DINING	4.9 X 5.1M	16'1" X 16'7"
MASTER BEDROOM	2.8 X 7.1M	9'2" X 23'3"
BEDROOM 2	3.5 X 3.8M	11'5" X 12'5"
BEDROOM 3	2.3 X 3.8M	7'5" X 12'5"
TERRACE	10.9 SQ M	117.3 SQ FT

**D5**  
**D7**

INTERNAL AREA	81.3 SQ M	875.1 SQ FT
LIVING/KITCHEN/DINING	6.1 X 5.0M	16'1" X 16'4"
MASTER BEDROOM	3.4 X 4.9M	11'2" X 16'1"
BEDROOM 2	2.7 X 3.8M	8'9" X 12'5"
TERRACE	12.4 SQ M	133.5 SQ FT

**D6**  
**D8**

INTERNAL AREA	81.0 SQ M	871.9 SQ FT
LIVING/KITCHEN/DINING	6.1 X 5.0M	20'0" X 16'4"
MASTER BEDROOM	3.4 X 4.9M	11'2" X 16'1"
BEDROOM 2	2.7 X 3.8M	8'9" X 12'5"
TERRACE	13.5 SQ M	145.3 SQ FT

**02**

INTERNAL AREA	102.0 SQ M	1097.9 SQ FT
LIVING/KITCHEN/DINING	6.4 X 5.3M	21'0" X 17'4"
MASTER BEDROOM	3.5 X 4.0M	11'5" X 13'1"
BEDROOM 2	2.8 X 5.5M	9'2" X 18'0"
BEDROOM 3	2.8 X 5.5M	9'2" X 18'0"
TERRACE	30.9 SQ M	332.6 SQ FT

**03**

INTERNAL AREA	52.1 SQ M	560.8 SQ FT
LIVING/KITCHEN/DINING	3.5 X 6.3M	11'5" X 20'7"
BEDROOM	2.8 X 5.8M	9'2" X 19'0"
TERRACE	19.3 SQ M	207.7 SQ FT



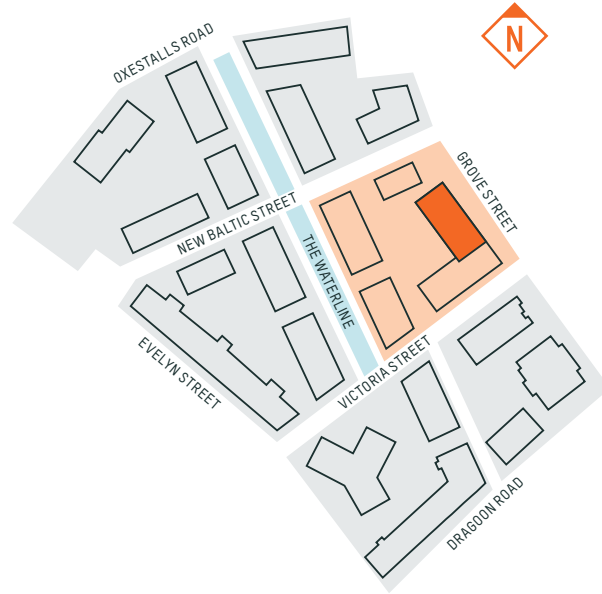
# CEDARWOOD MANSIONS

## 2D | Floor 02 & 03



**KEY**

- ◆ One Bedroom
- ◆ Two Bedroom
- ◆ Three Bedroom
- ◆ Four Bedroom
- ◆ Wheelchair Accessible
- ▲ Dimension Indicator
- W Fitted Wardrobe
- W/D Washer Dryer
- HEC Heating & Electrical
- C Coat Cupboard



<b>01</b>	<b>INTERNAL AREA</b>	<b>72.8 SQ M</b>	<b>783.6 SQ FT</b>
	LIVING/KITCHEN/DINING	4.0 X 7.1M	13'1" X 23'3"
	MASTER BEDROOM	2.8 X 4.9M	9'2" X 16'1"
	BEDROOM 2	3.4 X 3.8M	11'2" X 12'5"
	BALCONY	5.75 SQ M	62 SQ FT

<b>04</b>	<b>INTERNAL AREA</b>	<b>72.8 SQ M</b>	<b>783.6 SQ FT</b>
	LIVING/KITCHEN/DINING	4.0 X 7.1M	13'1" X 23'3"
	MASTER BEDROOM	2.8 X 4.9M	9'2" X 16'1"
	BEDROOM 2	3.4 X 3.8M	11'2" X 12'5"
	BALCONY	5.75 SQ M	62 SQ FT

<b>02</b>	<b>INTERNAL AREA</b>	<b>88.1 SQ M</b>	<b>948.3 SQ FT</b>
	LIVING/KITCHEN/DINING	6.7 X 4.6M	22'0" X 15'1"
	MASTER BEDROOM	5.6 X 2.9M	18'4" X 9'5"
	BEDROOM 2	3.0 X 4.2M	9'8" X 13'8"
	BEDROOM 3	2.1 X 4.2M	6'9" X 13'8"
	BALCONY	5.75 SQ M	62 SQ FT

<b>05</b>	<b>INTERNAL AREA</b>	<b>72.8 SQ M</b>	<b>783.6 SQ FT</b>
	LIVING/KITCHEN/DINING	4.0 X 7.1M	13'1" X 23'3"
	MASTER BEDROOM	2.8 X 4.9M	9'2" X 16'1"
	BEDROOM 2	3.4 X 3.8M	11'2" X 12'5"
	BALCONY	5.75 SQ M	62 SQ FT

<b>03</b>	<b>INTERNAL AREA</b>	<b>96.8 SQ M</b>	<b>1042.0 SQ FT</b>
	LIVING/KITCHEN/DINING	6.5 X 4.8M	21'3" X 15'7"
	MASTER BEDROOM	3.9 X 3.5M	12'8" X 11'5"
	BEDROOM 2	2.8 X 5.0M	9'2" X 16'4"
	BEDROOM 3	2.8 X 5.0M	9'2" X 16'4"
	BALCONY	5.75 SQ M	62 SQ FT

<b>06</b>	<b>INTERNAL AREA</b>	<b>63.0 SQ M</b>	<b>678.1 SQ FT</b>
	LIVING/KITCHEN/DINING	3.9 X 8.8M	12'8" X 28'9"
	BEDROOM	3.4 X 3.8M	11'2" X 12'5"
	BALCONY	5.75 SQ M	62 SQ FT

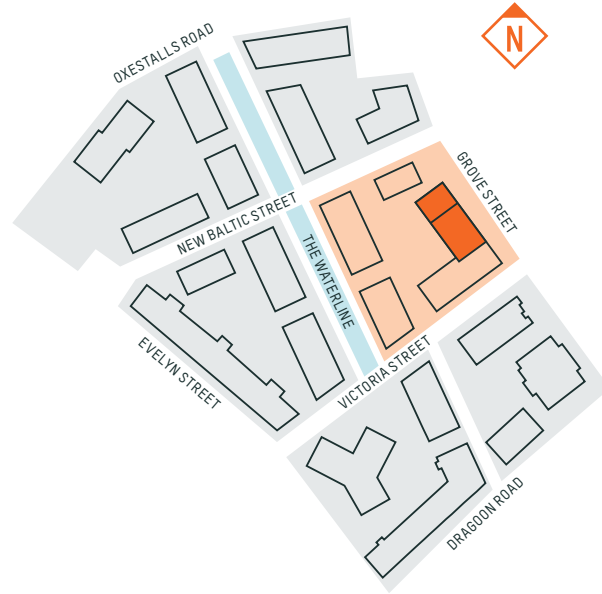
<b>07</b>	<b>INTERNAL AREA</b>	<b>52.7 SQ M</b>	<b>567.3 SQ FT</b>
	LIVING/KITCHEN/DINING	3.5 X 7.1M	11'5" X 23'3"
	BEDROOM	2.8 X 6.2M	9'2" X 20'3"
	BALCONY	5.75 SQ M	62 SQ FT

**CEDARWOOD MANSIONS**  
2D | Floor 04



**KEY**

- ◆ One Bedroom
- ◆ Two Bedroom
- ◆ Three Bedroom
- ◆ Four Bedroom
- ◆ Wheelchair Accessible
- ▲ Dimension Indicator
- W Fitted Wardrobe
- W/D Washer Dryer
- HEC Heating & Electrical
- C Coat Cupboard



**02**

INTERNAL AREA	77.9 SQ M	838.5 SQ FT
LIVING/KITCHEN/DINING	6.9 X 4.3M	22'6" X 14'1"
MASTER BEDROOM	3.8 X 3.5M	12'5" X 11'5"
BEDROOM 2	3.3 X 3.7M	10'8" X 12'1"
TERRACE	12.7 SQ M	136.7 SQ FT

**04**

INTERNAL AREA	63.0 SQ M	678.1 SQ FT
LIVING/KITCHEN/DINING	3.9 X 8.8M	12'8" X 28'9"
BEDROOM	3.4 X 3.8M	11'2" X 12'5"
BALCONY	5.75 SQ M	62 SQ FT

**03**

INTERNAL AREA	72.8 SQ M	783.6 SQ FT
LIVING/KITCHEN/DINING	4.0 X 7.1M	13'1" X 23'3"
MASTER BEDROOM	2.8 X 4.9M	9'2" X 16'1"
BEDROOM 2	3.4 X 3.8M	11'2" X 12'5"
BALCONY	5.75 SQ M	62 SQ FT

**05**

INTERNAL AREA	52.4 SQ M	564.0 SQ FT
LIVING/KITCHEN/DINING	3.5 X 7.1M	11'5" X 23'3"
BEDROOM	2.8 X 6.2M	9'2" X 20'3"
BALCONY	5.75 SQ M	62 SQ FT

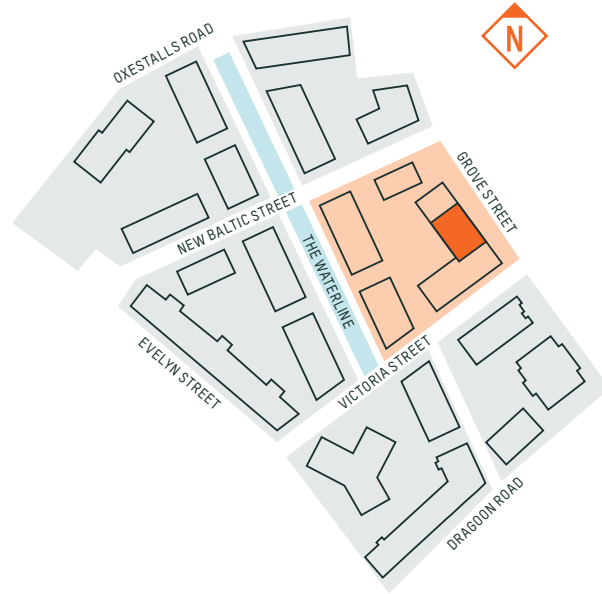
# CEDARWOOD MANSIONS

## 2D | Floor 05 & 06



**KEY**

- ◆ One Bedroom
- ◆ Two Bedroom
- ◆ Three Bedroom
- ◆ Four Bedroom
- ◆ Wheelchair Accessible
- ▲ Dimension Indicator
- W Fitted Wardrobe
- W/D Washer Dryer
- HEC Heating & Electrical
- C Coat Cupboard



**02**

INTERNAL AREA	78.1 SQ M	840.7 SQ FT
LIVING/KITCHEN/DINING	6.9 X 4.3M	22'6" X 14'1"
MASTER BEDROOM	3.8 X 3.5M	12'5" X 11'5"
BEDROOM 2	3.3 X 3.7M	10'8" X 12'1"
BALCONY	5.75 SQ M	62 SQ FT

**04**

INTERNAL AREA	63.1 SQ M	679.2 SQ FT
LIVING/KITCHEN/DINING	3.9 X 8.8M	12'8" X 28'9"
BEDROOM	3.4 X 3.8M	11'2" X 12'5"
BALCONY	5.75 SQ M	62 SQ FT

**03**

INTERNAL AREA	72.9 SQ M	784.7 SQ FT
LIVING/KITCHEN/DINING	4.0 X 7.1M	13'1" X 23'3"
MASTER BEDROOM	2.8 X 4.9M	9'2" X 16'1"
BEDROOM 2	3.4 X 3.8M	11'2" X 12'5"
BALCONY	5.75 SQ M	62 SQ FT

**05**

INTERNAL AREA	52.5 SQ M	565.1 SQ FT
LIVING/KITCHEN/DINING	3.5 X 7.1M	11'5" X 23'3"
BEDROOM	2.9 X 6.2M	9'2" X 20'3"
BALCONY	5.75 SQ M	62 SQ FT

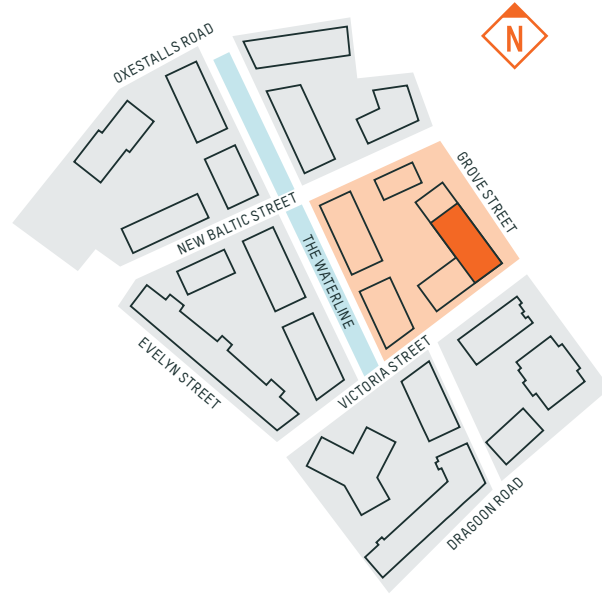


**CEDARWOOD MANSIONS**  
2D | Floor 07



**KEY**

- ◆ One Bedroom
- ◆ Two Bedroom
- ◆ Three Bedroom
- ◆ Four Bedroom
- ◆ Wheelchair Accessible
- ▲ Dimension Indicator
- W Fitted Wardrobe
- W/D Washer Dryer
- HEC Heating & Electrical
- C Coat Cupboard



**02**

INTERNAL AREA	78.3 SQ M	842.8 SQ FT
LIVING/KITCHEN/DINING	6.9 X 4.3M	22'6" X 14'1"
MASTER BEDROOM	3.8 X 3.5M	12'5" X 11'5"
BEDROOM 2	3.3 X 3.7M	10'8" X 12'1"
BALCONY	5.75 SQ M	62 SQ FT

**05**

INTERNAL AREA	74.3 SQ M	799.8 SQ FT
LIVING/KITCHEN/DINING	4.9 X 5.6M	16'1" X 18'4"
MASTER BEDROOM	3.7 X 3.2M	12'1" X 10'5"
BEDROOM 2	4.1 X 3.1M	13'5" X 10'2"
BALCONY	5.75 SQ M	62 SQ FT

**03**

INTERNAL AREA	72.9 SQ M	784.7 SQ FT
LIVING/KITCHEN/DINING	4.0 X 7.1M	13'1" X 23'3"
MASTER BEDROOM	2.8 X 4.9M	9'2" X 16'1"
BEDROOM 2	3.3 X 3.8M	10'8" X 12'5"
BALCONY	5.75 SQ M	62 SQ FT

**06**

INTERNAL AREA	74.9 SQ M	806.2 SQ FT
LIVING/KITCHEN/DINING	7.1 X 3.8M	23'3" X 12'5"
MASTER BEDROOM	4.8 X 3.3M	15'7" X 10'8"
BEDROOM 2	4.0 X 3.8M	13'1" X 12'5"
TERRACE	13.1 SQ M	141.0 SQ FT

**04**

INTERNAL AREA	51.8 SQ M	557.6 SQ FT
LIVING/KITCHEN/DINING	3.9 X 7.1M	12'8" X 23'3"
BEDROOM	3.4 X 3.8M	11'2" X 12'5"
BALCONY	5.75 SQ M	62 SQ FT

**07**

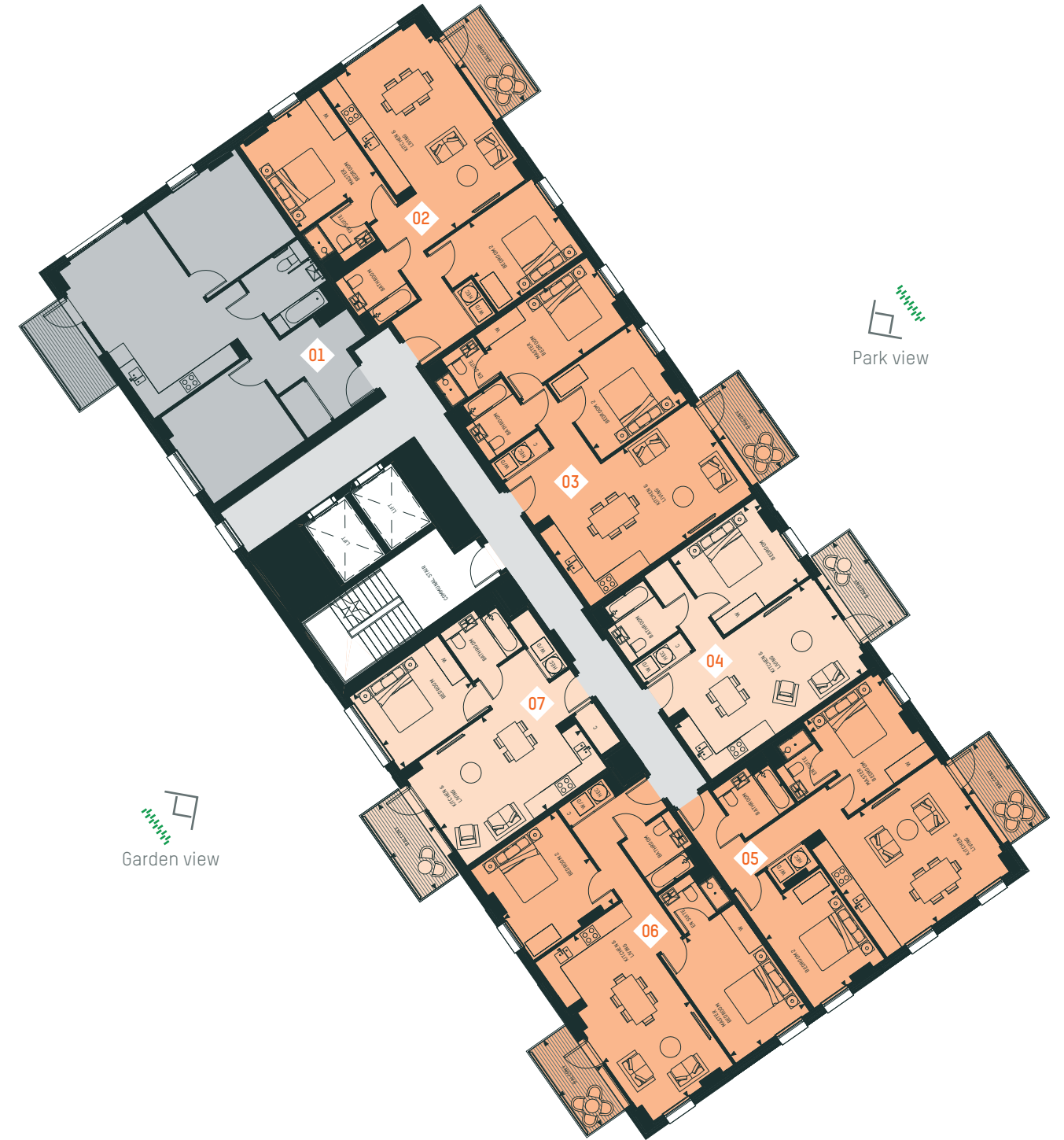
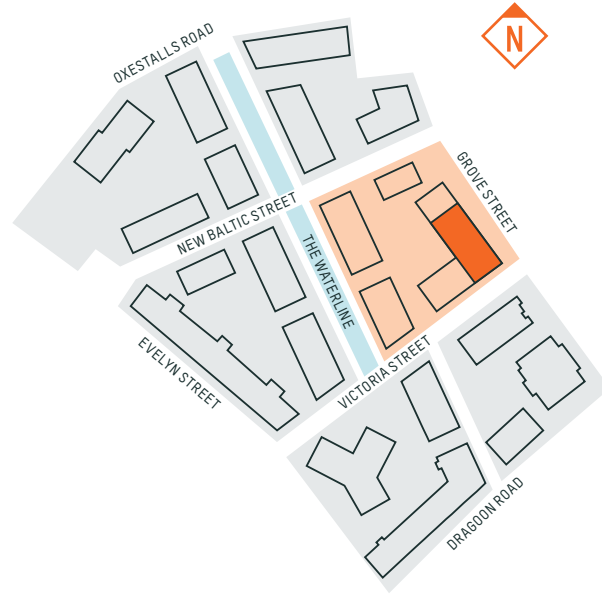
INTERNAL AREA	50.7 SQ M	545.7 SQ FT
LIVING/KITCHEN/DINING	4.1 X 6.2M	13'5" X 20'3"
BEDROOM	3.2 X 3.9M	10'5" X 12'8"
TERRACE	12.9 SQ M	138.9 SQ FT

**CEDARWOOD MANSIONS**  
2D | Floor 08 & 09



**KEY**

- ◆ One Bedroom
- ◆ Two Bedroom
- ◆ Three Bedroom
- ◆ Four Bedroom
- ◆ Wheelchair Accessible
- ▲ Dimension Indicator
- W Fitted Wardrobe
- W/D Washer Dryer
- HEC Heating & Electrical
- C Coat Cupboard



**02**

INTERNAL AREA	78.3 SQ M	842.8 SQ FT
LIVING/KITCHEN/DINING	6.9 X 4.3M	22'6" X 14'1"
MASTER BEDROOM	3.8 X 3.5M	12'5" X 11'5"
BEDROOM 2	3.3 X 3.7M	10'8" X 12'1"
BALCONY	5.75 SQ M	62 SQ FT

**05**

INTERNAL AREA	74.3 SQ M	793.1 SQ FT
LIVING/KITCHEN/DINING	4.9 X 5.6M	16'1" X 18'4"
MASTER BEDROOM	3.7 X 3.2M	12'1" X 10'5"
BEDROOM 2	4.0 X 3.1M	13'5" X 10'2"
BALCONY	5.75 SQ M	62 SQ FT

**03**

INTERNAL AREA	72.9 SQ M	784.7 SQ FT
LIVING/KITCHEN/DINING	4.0 X 7.1M	13'1" X 23'3"
MASTER BEDROOM	2.8 X 4.9M	9'2" X 16'1"
BEDROOM 2	3.3 X 3.8M	10'8" X 12'5"
BALCONY	5.75 SQ M	62 SQ FT

**06**

INTERNAL AREA	76.7 SQ M	825.6 SQ FT
LIVING/KITCHEN/DINING	7.1 X 3.8M	23'3" X 12'5"
MASTER BEDROOM	4.8 X 3.3M	15'7" X 10'8"
BEDROOM 2	4.0 X 3.8M	13'1" X 12'5"
BALCONY	5.75 SQ M	62 SQ FT

**04**

INTERNAL AREA	51.8 SQ M	557.6 SQ FT
LIVING/KITCHEN/DINING	3.9 X 7.1M	12'8" X 23'3"
BEDROOM	3.4 X 3.8M	11'2" X 12'5"
BALCONY	5.75 SQ M	62 SQ FT

**07**

INTERNAL AREA	50.8 SQ M	545.7 SQ FT
LIVING/KITCHEN/DINING	4.1 X 6.2M	13'5" X 20'3"
BEDROOM	3.2 X 3.9M	10'5" X 12'8"
BALCONY	5.75 SQ M	62 SQ FT

## SPECIFICATIONS

### INTERIOR FINISHES

- Two colour palette options available (subject to contract)
- Engineered timber flooring to entrance, living room and kitchen areas
- Sustainably-sourced, wool mix carpet to bedrooms
- Matt white painted walls and ceilings
- Painted solid core timber doors throughout, with stainless steel ironmongery
- Floor to ceiling double glazed window with casement doors to balconies and / or terraces
- Utility cupboards with built-in energy efficient washer drier
- Built-in wardrobes to master bedroom

### KITCHENS

- Solid surface worktops with set in stainless steel sink
- Handleless soft close doors and drawers to kitchen cabinets
- Hans Grohe, or similar, stainless steel mixer tap
- Bosch, or similar, energy efficient appliances including integrated dishwasher, full height fridge freezer, oven and microwave
- Ceramic hob with integrated recirculation fan
- Fully tiled splash backs
- Space-saving waste and recycle bins

### BATHROOMS / EN-SUITE

- Contemporary white sanitary ware
- Bath with semi-frameless glass screen in main bathrooms
- Shower tray with semi-frameless glass screen in en-suites
- Thermostatic bath / shower mixers
- Fitted vanity cabinet with mirrored frontage and integrated shaver outlet
- Integral fitted under counter vanity unit with laminate worktop
- Dual flush back to wall WC with concealed cistern
- Wall tiling with feature contrast panel to shower / bath
- Large format ceramic floor tiles
- Stainless steel heated towel rail
- Stainless steel fixtures and fittings

### ELECTRICAL FIXTURES & FITTINGS

- Energy-efficient recessed LED lighting
- Feature LED down lighting recessed in to kitchen
- TV & DAB radio points in living area and master bedroom
- Sky+HD points in the living area

### HEATING & VENTILATION

- Central combined heat and power system delivering individually metered, energy efficient, hot water and heating to each home
- Underfloor heating (except in bathrooms)
- Individual thermostat controls in living area and bedrooms
- Mechanical ventilation with heat recovery in each apartment

### BALCONY / TERRACE / GARDEN

- Architectural metalwork balustrades to balconies and terraces
- Hard-landscaped finishes to terraces and gardens
- Low-level hedge shrubs to garden perimeter (ground floor only)

### SHARED COMMON PARTS SPECIFICATION: BUILDING FABRIC

- Concrete structural frame
- Brickwork and composite metal cladding façade
- Soundproofing to walls and floors separating homes to outperform current Building Regulations
- Carpeted and painted communal corridors throughout
- Passenger lifts and stair access to all levels
- Ground floor lockable cycle storage
- Ground floor refuse / recycling storage
- Postal boxes located in each communal entrance area

### EXTERNAL COMMUNAL AREA

- Open-plan ground floor and podium level landscaping, with a mixture of planted and paved areas
- Option to purchase right to use car parking space with selected homes (subject to availability)

### MANAGEMENT AND SECURITY

- Designed in accordance with Secure by Design principles
- Multi-locking front door system
- CCTV system to all entry and exit points



Kitchen view of a typical apartment at Cedarwood Square in a light palette

**Get in touch:**

+44 (0)20 3815 9000

[www.thetimberyard.london](http://www.thetimberyard.london)[thetimberyard@lendlease.com](mailto:thetimberyard@lendlease.com)**Sales Suite:**

Evelyn Street  
Deptford  
London, SE8 5RJ



Disclaimer: The information and images contained in this document are illustrative and/or indicative only as at January 2016 of the finished product and are subject to change. This includes any design detail, individual features, colours, services, appliances, furniture, furniture layouts or landscaping. Development layouts and dimensions provide approximate measurements only and are subject to variation. Total areas provided are net sales areas and are subject to a variance of +/- 5%. There may be variations in size of gardens, balconies, windows and terraces depending on the location of the dwellings. The information herein should not be relied upon as accurately describing any of the specific matters under the Consumer Protection for Unfair Trading Regulations Act 2008 or otherwise. For more detailed information please contact our sales team. The information in this document does not constitute a contract or warranty.



**lendlease**